



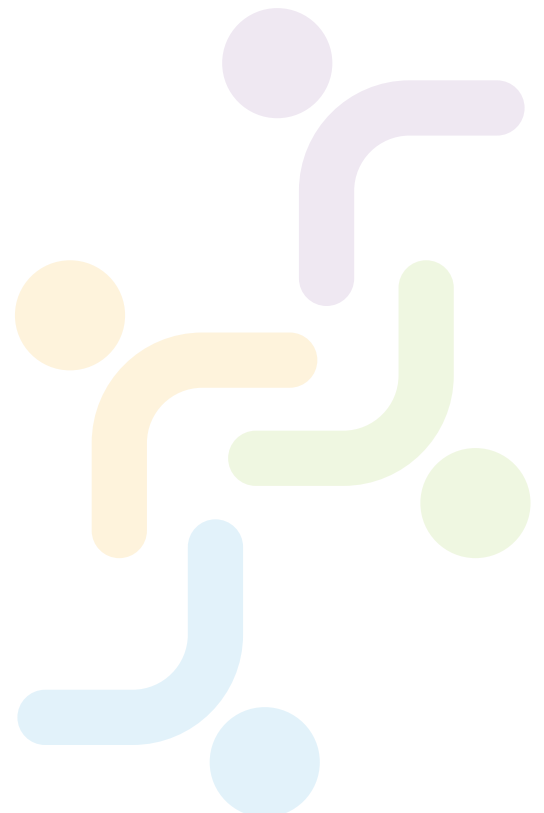
- Not-for-profit
- Government
- Business
- Community
- Philanthropy

Changing lives together

Inter-agency groups

operating in Cockburn, Fremantle and/or Melville

February 2016



Key

Working group contact	Inter-agency group chair	Membership	Purpose of inter-agency grouping	Focus	Formal governance arrangement
-----------------------	--------------------------	------------	----------------------------------	-------	-------------------------------

Regional CaLD Network group

Contact	Anita Tuzlokovic, Settlement Services Manager, Fremantle Multicultural Centre E-mail: Anita.tuzlukovic@fmcwa.com.au Tel: 9336 8282
Group chair	Fremantle Multicultural Centre Settlement Services Team
Membership	<p>The South West CALD Network is made up of government, non-government agencies and community groups to share information, knowledge and resources so that they can better support their culturally and linguistically diverse (CaLD) communities.</p> <p>Membership also includes but is not limited to workers and volunteers from ethno-specific and mainstream service providers, members of CaLD communities and representatives from ethno-specific clubs. The network welcomes new members and provides an opportunity to engage with stakeholders, share information, discuss local issues, attend presentations and explore partnership opportunities</p> <p>The South West CaLD Network is open to anyone interested in equity and access in the South West for CaLD communities.</p>
Purpose	<ul style="list-style-type: none"> To provide a framework for ethno-specific and mainstream organisations to work together to develop and implement actions to enhance access to community services and improve service provision for individuals from CaLD backgrounds; To identify relevant issues related to the CaLD population, including the needs of smaller and emerging communities, regarding service planning and delivery, and actions to be implemented to resolve issues; To share and promote best practice initiatives and provide up to date information about services that target CaLD communities; To provide an opportunity for CaLD community representatives to meet workers from organisations and improve their understanding about services; To provide an opportunity for network members to meet, share ideas, information, experiences and issues as well as contribute to service planning and development; Be the key point of contact for the Office of Multicultural Interests (OMI); To develop and support working groups to look at specific issues relating to cultural diversity and access to services.
Focus	<p>The focus of the inter-agency group is to be an information sharing network as well as raise systemic advocacy issues. At each meeting service providers have the opportunity to present information on their services.</p> <p>The forum also facilitates interagency referrals.</p>
Governance	Terms of Reference

Cockburn Melville Fremantle Youth Forum

Contact	Christine George, Project Officer – Youth, Community Development, City of Fremantle E-mail: christineg@fremantle.wa.gov.au Tel: 9432 9874
Group chair	Co-chairs: Christine George, City of Fremantle; Jo McKay, City of Melville; Michelle Champion, City of Cockburn
Membership	3 LGAs: City of Fremantle, City of Melville, City of Cockburn Government agencies: Human Services, Justice/Police, Health and Education, Child Protection and Family Services Youth organisations: Anglicare Y-shac, Mercy Reconnect, Youth Place/St Pat’s, Fern’s House, SMYL, Fremantle Multicultural Centre.
Purpose	A network of local government services and agencies committed to supporting, engaging and empowering local young people.
Focus	Information sharing; guest presentations; discussion of current issues; gaps in the region; training for the region; networks/collaboration on programs, projects, activities and opportunities.
Governance	Terms of Reference

Family Support Network Group

Contact	Linda Walker, Support Services Team Leader, City of Cockburn. Email: lwalker@cockburn.wa.gov.au
Group chair	Co-chairs: Linda Walker, City of Cockburn; Dominique Ward, City of Melville; Stacey Robson, City of Fremantle
Membership	Not- for- profit and local government agencies who provide family support services in the South West Metro area; also some government departments such as the Department for Child Protection and Family Support (CPFS), Disability Services.
Purpose	To provide an opportunity to share information about local services by visiting new locations, hosting guest speakers, examining case studies, identifying emerging issues, mapping assets.
Focus	Main focus is that of networking and information sharing. Facilitated by the 3 local governments in the area, with support of other local agencies, to share information and identify emerging trends and issues.

Fremantle Interagency Homelessness Working Group

Contact	Kerry Wadsworth, Coordinator Homelessness Services, AnglicareWA E-mail: Kerry.Wadsworth@anglicarewa.org.au Tel: 6310 0574
Group chair	Kerry Wadsworth (Anglicare WA)
Membership	<p>Membership is comprised of key leading senior NGO homelessness/accommodation service providers within Fremantle/Cockburn/Melville, including Local Government, Housing Authority and Department for Child Protection and Family Support (CPFS), and a representative from Rockingham inter-agency working group.</p> <p>There is also a broader membership data base established that includes direct/grass roots accommodation service providers who are invited to participate in forums and networking opportunities.</p>
Purpose	<ul style="list-style-type: none"> • Achieve optimal outcomes for people at risk of or experiencing homelessness. • To strengthen liaison, communication, information sharing, partnerships and referral pathways between government and non-government services. • To enhance client access to services and the development of localized interagency responses to homelessness. • To identify, track and leverage issues to executive level groups. • Identify funding opportunities in response to service gaps and capacity building opportunities. • Commitment to proactive and solution focused collaboration.
Focus	Networking/information sharing/strategic
Governance	Terms of Reference

Partners in Recovery

Contact	Sarah Hithersay, One Healthy Community E-mail: Sarah.Hithersay@onehc.com.au Tel: 9319 0555
Group chair	Sarah Hithersay, One Healthy Community
Membership	<p>Follows a consortium model which consists of :</p> <ul style="list-style-type: none"> • One Healthy Community • Fremantle Multicultural Centre • RUAH • Anglicare • St Patrick's Community Support Centre • Alma Street Clinic • Community First International.
Purpose	<ul style="list-style-type: none"> • Facilitate better coordination of clinical and other supports and services to deliver 'wrap-around' care individually tailored to the client's needs; • Strengthen partnerships and build better links among various clinical and community support organizations responsible for delivering services to the PIR target group; • Improve referral pathways that facilitate access to the range of services and supports needed by the PIR target groups; • Promote a community-based recovery model that underpins all clinical and community support services delivered to people experiencing severe and persistent mental illness with complex needs.

Purely Early Years

Contact	Jennifer Harper, Coordinator, Meerilinga Family Centre Cockburn E-mail: cockburn@meerilinga.org.au Tel: 9331 2211
Group chair	Lesley Moreschi (CEO), Meerilinga Young Children's Services Inc
Membership	Service providers from or working in Fremantle, East Fremantle, Cockburn and Melville who work with parents and young children.
Purpose	Purely Early Years is a network that connects those who support the health and well-being of children aged between 0-5 years. This is done through: <ul style="list-style-type: none"> • encouraging information sharing; • promoting the importance of health and wellbeing in the early years; • identifying opportunities to work in partnership; • encouraging participation from local families in early years initiatives; • advocating for local families.
Focus	Bringing together representatives from government, non-government, private and not-for-profit agencies and services to support the health and well being of children 0-5 years.
Governance	Terms of Reference

Safer Melville

Contact	Tanya van Sittert, Coordinator Community Safety Crime Prevention, City of Melville E-mail: tanya.vansittert@melville.wa.gov.au Tel: 9364 0716
Group chair	Elected member, City of Melville
Membership	Palmyra Police Station; Murdoch Police Station; Community Engagement Division – WA Police; Department of Education; Department of Aboriginal Affairs; South Metro Population Health Unit; Housing Authority; Department of Corrective Services; Department for Child Protection and Family Support; Wandoo Reintegration Facility; Injury Control Council of WA (ICCWA); Melville Cockburn Chamber of Commerce; Road Safety and Travel Smart Committee; City of Melville.
Purpose	To promote safety and injury reduction for people living, working and visiting the City of Melville by applying the Safe Communities framework. This framework promotes a model where all sectors of the community work together in a coordinated and collaborative way, forming partnerships to promote safety, manage risk, increase the overall safety of all its members and reduce the fear of harm.
Focus	Networking, information sharing and strategic planning.
Governance	Terms of Reference

Strong Families

Contact	Ann Atkinson, Coordinator, Strong Families, Fremantle E-mail: ann.atkinson@strongfamilies.wa.gov.au
Group chair	Ann Atkinson, Strong Families
Membership	Department for Child Protection and Family Support; WA Police; Department of Corrective Services; Department of Education; Housing Authority; Department of Health; Drug and Alcohol Office; Disability Services Commission.
Purpose	Strong Families is set up to assist families who are receiving services from two or more agencies. Uses a case management approach that brings these families and agencies together as partners to address issues of mutual concern. Family members and agency workers are brought together to share relevant information, identify goals and develop plans to collaboratively help meet the family's needs. This process helps build the capacity of agencies to collaborate and provide coordinated, integrated services to families.
Focus	Networking, information sharing, strategic and care management.
Governance	Terms of Reference

Integrated Offender Management Working Group – Youth

Contact	Russ Eldean, Youth Policing Operations E-mail: russ.eldean@police.wa.gov.au Tel: 9336 9971
Group chair	Russ Eldean, WA Police
Membership	Prescribed agencies only (other government agencies join meeting as needed): WA Police, Youth Justice Services, Juvenile Justice Team and Education officer, Child Protection and family services – Duty team and Parent Support, Department of Education, Housing Authority.
Purpose	A multi-agency approach to monitor and reduce the offending rates of young offenders, particularly prolific priority offenders within the South Metropolitan District. The working group seeks to assist youth offenders and their families, ensuring that they are linked in with appropriate services and programs specific to their needs. The meeting helps to maintain productive working relationships with service providers of youth diversionary programs, interagency and working groups and other government and non-government agencies on local crime issues and the provision of services and to develop mutually beneficial outcomes that reduce the offending rates of young offenders.
Focus	Inter-agency approach to tackle youth offending, positive action plans, information sharing.

Fremantle Community Mental Health Working Group

Contact	Sharron Ryan, Senior Community Child Protection Officer E-mail: Sharron.Ryan@cpfs.wa.gov.au Tel: 9431 8838
Group chair	Sharron Ryan, Senior Community Child Protection Officer
Membership	Department for Child Protection and Family Support, Alma Street Centre (Fremantle Health Services), St John of God Outreach, Ruah, Headspace, Richmond Fellowship WA, Arafmi, Fremantle Women's Health Service.
Purpose	To achieve optimal outcomes for children whose parent (s) or guardian has mental health issues. To provide a forum to strengthen liaison, communication and consultation between service providers by developing mutually agreed referral pathways and procedures. To facilitate an open channel of dialogue and communication between the services by ongoing reciprocal information sharing, equal partnerships and participation.

SuMMAT

Contact	Rachel Grice, Admin support, SuMMAT E-mail: Rachel.grice@health.wa.gov.au Tel: 6152 1199
Group chair	Dr. Elizabeth Moore, Executive Director, South Metro Health Service
Membership	Consumers, carers and service providers with an interest in mental health.
Purpose	South Metro peak mental health advisory group which is a forum for changing policy and attitudes towards mental illness and recovery.

Fremantle Family Support Network

Contact	Bev Jowle, Alliance Manager, Fremantle Family Support Network E-mail: BJowle@stpats.com.au Tel: 9494 3720
Group chair	Michael Piu, Deputy CEO, St Patrick's Community Support Centre
Membership	Not for profit agencies, Federal, State and Local Government agencies providing family support and related services in the South West Metro area.
Purpose	A collaborative model to provide support services to families with complex needs. The aim of the network is to prevent families from entering the statutory child protection system and provide them with responsive, appropriate and integrated services.
Focus	The main focus is to develop a collaborative model for the efficient and effective delivery of support to families with complex needs. The FSN is guided by a Steering Committee and Operations and Allocations groups whose members are derived from the partnering agencies.

Western Australian Network for the Prevention of Elder Abuse

Contact	Sharon Richards, Service Delivery Manager, Advocare Incorporated E-mail: sharonr@advocare.org.au Tel: 9479 7566 or Mary Kepert, APEA:WA, Executive Officer E-mail: mkepert@advocare.org.au Tel: 9479 7566
Group chair	Sharon Richards
Membership	Any provider, community or residential care who is providing care to or representing older Australians (community groups, local government, Residential Aged Care Providers, Community Care providers, other private and government funded).
Purpose	The mission of the Western Australian Network for the Prevention of Elder Abuse is to provide a forum for relevant stakeholders to help stop elder abuse.
Focus	<ul style="list-style-type: none">• To promote community awareness about elder abuse.• To identify systemic elder abuse issues and then move to inform an appropriate body e.g. Advocare, or APEA (Alliance for the Prevention of Elder Abuse).
Governance	Terms of Reference

Alliance for the Prevention of Elder Abuse: Western Australia (APEA:WA)

Contact	Mary Kepert, APEA:WA, Executive Officer E-mail: mkepert@advocare.org.au Tel: 9479 7566
Group chair	Greg Mahney, Advocare Incorporated
Membership	APEA:WA is a high level policy group which meets bi-monthly and includes WA Police, Public Advocate, Public Trustee, the Department of Health, Department of Local Government and Communities, Disability Services Commission, Legal Aid, and WALGA (Western Australian Local Government Association).
Purpose	Members of APEA:WA work collaboratively to raise awareness of issues that surround elder abuse, and to influence current attitudes, policies and practices in relation to elder abuse.
Focus	<ul style="list-style-type: none">• To raise community knowledge and understanding of elder abuse;• To provide policy advice on elder abuse;• To expand the breadth and quality of knowledge of elder abuse;• To support provision of adequate elder abuse prevention and protection services; and• To promote professional education and training in elder abuse issues.
Governance	Terms of Reference